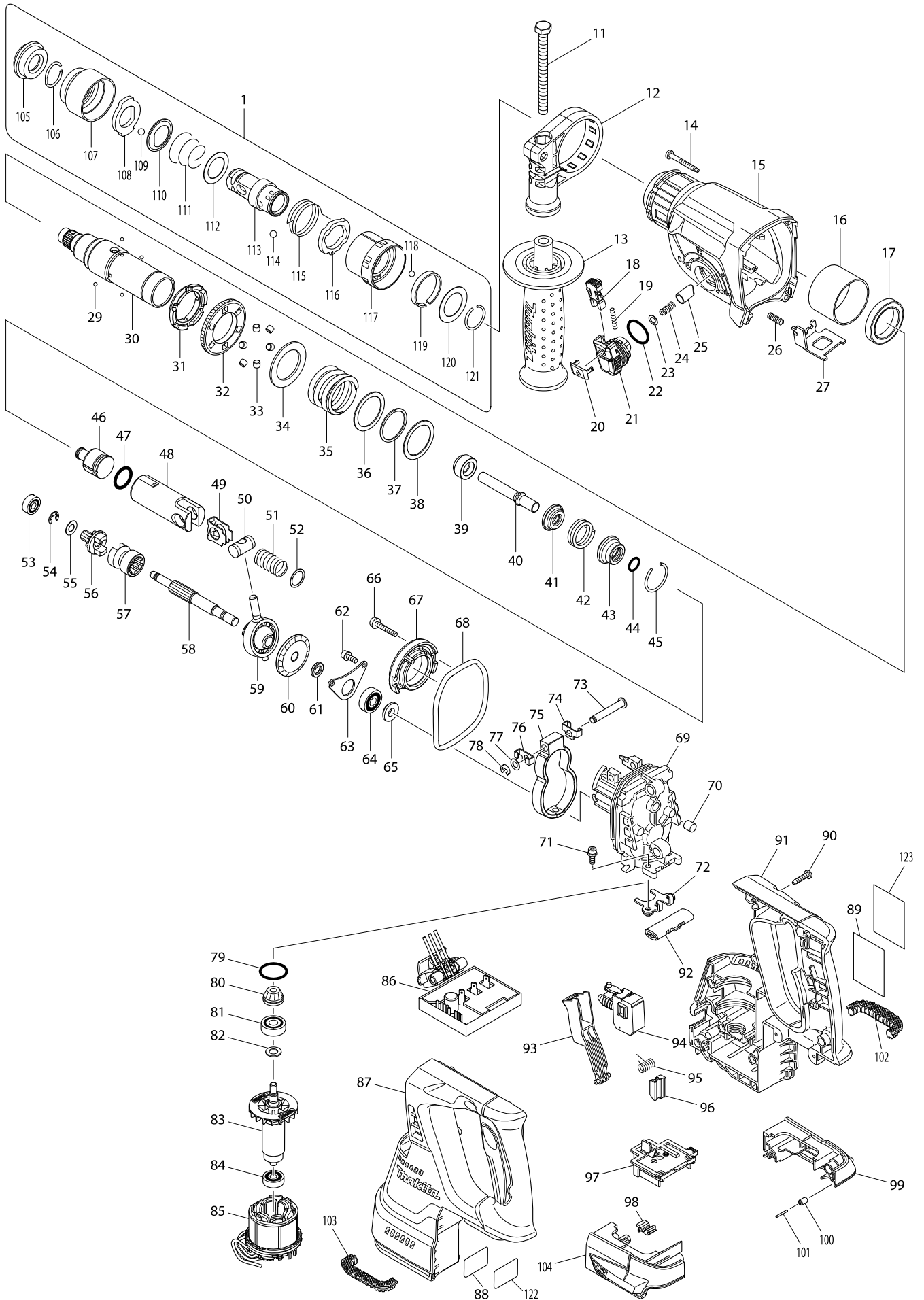


Modelo DHR243 MARTILLO 24MM



Artículo	Código	Descripción	Interc	Cantida	N/O	Opción 1	Opción 2	Notas
001	194080-7	PORTABROCAS SDS-PLUS HR2450T/F		1				
D10		INC. 105-121						
011	266745-2	TORNILLO ASA 8X90 BHR242		1				
012	453129-5	ABRAZADERA ASA 8X90 BHR242		1				
013	158057-6	EMPUÑADURA PARA HR2220/HR2460		1				
014	266351-3	TORNILLO PT 4X35 9557PB		4				
015	141229-0	CARCASA ENGRANAJES BHR242		1	*			
C10	213345-9	JUNTA DE SELLADO 25 HR2230		1	*			
C20	890903-4	INDICATION LABEL		1	*			
015-1	144354-6	GEAR HOUSING COMPLETE	<	1				
C10	213345-9	JUNTA DE SELLADO 25 HR2230		1				
C20	810X86-8	INDICATION LABEL	<	1				
016	331890-3	CASQUILLO ENGRANAJES HR2300		1				
017	211294-4	RODAMIENTO 6806LLU HR2300		1				
018	454112-5	BOTON BLOQUEO HR242		1				
019	234264-6	MUELLE 3 BHR242		1				
020	453131-8	TAPA PALANCA CAMBIO BHR242		1				
021	453125-3	PALANCA CAMBIO BHR242		1				
022	213381-5	JUNTA TORICA 21		1				
023	253308-3	ARANDELA FINA 6*		1				
024	234147-0	MUELLE SELECTOR 5 HR2300		1				
025	325785-0	LEVA SELECTOR HR2300		1	*			
025-1	326850-8	PUSH CORN	S	1				
026	233360-7	MUELLE 4 MT952		1				
027	346537-6	PLACA BLOQUEO BHR242		1				
029	216019-1	BOLA DE ACERO PARA 6796FD		4				
030	140266-1	PORTAHERRAMENTAS HR2610T		1				
031H	313149-0	ARANDELA HR2300		1	*			
031I	313149-0	ARANDELA HR2300		1	*			
031J	313149-0	ARANDELA HR2300		1	*			
031K	313149-0	ARANDELA HR2300		1	*			
031L	313149-0	ARANDELA HR2300		1	*			
031M	313149-0	ARANDELA HR2300		1	*			
031N	313149-0	ARANDELA HR2300		1	*			
031O	313149-0	ARANDELA HR2300		1	*			
031P	313149-0	ARANDELA HR2300		1	*			
031Q	313149-0	ARANDELA HR2300		1	*			
031R	313149-0	ARANDELA HR2300		1	*			
031S	313149-0	ARANDELA HR2300		1	*			
031T	313149-0	ARANDELA HR2300		1	*			
031-1H	332139-4	DRIVING FLANGE	S	1				
031-1I	332139-4	DRIVING FLANGE	S	1				
031-1J	332139-4	DRIVING FLANGE	S	1				
031-1K	332139-4	DRIVING FLANGE	S	1				
031-1L	332139-4	DRIVING FLANGE	S	1				
031-1M	332139-4	DRIVING FLANGE	S	1				
031-1N	332139-4	DRIVING FLANGE	S	1				
031-1O	332139-4	DRIVING FLANGE	S	1				

Artículo	Código	Descripción	Interc	Cantida	N/O	Opción 1	Opción 2	Notas
031-1P	332139-4	DRIVING FLANGE	S	1				
031-1Q	332139-4	DRIVING FLANGE	S	1				
031-1R	332139-4	DRIVING FLANGE	S	1				
031-1S	332139-4	DRIVING FLANGE	S	1				
031-1T	332139-4	DRIVING FLANGE	S	1				
031-1U	332139-4	DRIVING FLANGE		1				
032H	227232-6	CORONA 51 HR2300		1	*			
032I	227232-6	CORONA 51 HR2300		1	*			
032J	227232-6	CORONA 51 HR2300		1	*			
032K	227232-6	CORONA 51 HR2300		1	*			
032L	227232-6	CORONA 51 HR2300		1	*			
032M	227232-6	CORONA 51 HR2300		1	*			
032N	227232-6	CORONA 51 HR2300		1	*			
032O	227232-6	CORONA 51 HR2300		1	*			
032P	227232-6	CORONA 51 HR2300		1	*			
032Q	227232-6	CORONA 51 HR2300		1	*			
032R	227232-6	CORONA 51 HR2300		1	*			
032S	227232-6	CORONA 51 HR2300		1	*			
032T	227232-6	CORONA 51 HR2300		1	*			
032-1H	227360-7	SPUR GEAR 51	S	1				
032-1I	227360-7	SPUR GEAR 51	S	1				
032-1J	227360-7	SPUR GEAR 51	S	1				
032-1K	227360-7	SPUR GEAR 51	S	1				
032-1L	227360-7	SPUR GEAR 51	S	1				
032-1M	227360-7	SPUR GEAR 51	S	1				
032-1N	227360-7	SPUR GEAR 51	S	1				
032-1O	227360-7	SPUR GEAR 51	S	1				
032-1P	227360-7	SPUR GEAR 51	S	1				
032-1Q	227360-7	SPUR GEAR 51	S	1				
032-1R	227360-7	SPUR GEAR 51	S	1				
032-1S	227360-7	SPUR GEAR 51	S	1				
032-1T	227360-7	SPUR GEAR 51	S	1				
032-1U	227360-7	SPUR GEAR 51		1				
033H	268226-2	BULON 6 HR2300		6	*			
033I	268226-2	BULON 6 HR2300		6	*			
033J	268226-2	BULON 6 HR2300		6	*			
033K	268226-2	BULON 6 HR2300		6	*			
033L	268226-2	BULON 6 HR2300		6	*			
033M	268226-2	BULON 6 HR2300		6	*			
033N	268226-2	BULON 6 HR2300		6	*			
033O	268226-2	BULON 6 HR2300		6	*			
033P	268226-2	BULON 6 HR2300		6	*			
033Q	268226-2	BULON 6 HR2300		6	*			
033R	268226-2	BULON 6 HR2300		6	*			
033S	268226-2	BULON 6 HR2300		6	*			
033T	268226-2	BULON 6 HR2300		6	*			
034H	267414-8	ARANDELA 30 HR2300		1	*			
034I	267414-8	ARANDELA 30 HR2300		1	*			

Artículo	Código	Descripción	Interc	Cantida	N/O	Opción 1	Opción 2	Notas
034J	267414-8	ARANDELA 30 HR2300		1	*			
034K	267414-8	ARANDELA 30 HR2300		1	*			
034L	267414-8	ARANDELA 30 HR2300		1	*			
034M	267414-8	ARANDELA 30 HR2300		1	*			
034N	267414-8	ARANDELA 30 HR2300		1	*			
034O	267414-8	ARANDELA 30 HR2300		1	*			
034P	267414-8	ARANDELA 30 HR2300		1	*			
034Q	267414-8	ARANDELA 30 HR2300		1	*			
034R	267414-8	ARANDELA 30 HR2300		1	*			
034S	267414-8	ARANDELA 30 HR2300		1	*			
034T	267414-8	ARANDELA 30 HR2300		1	*			
035	234148-8	MUELLE 31 HR2300		1				
036	267153-0	ARANDELA 30 HR2300		1				
037	257932-4	ARANDELA CIERRE 30 HR2300		1				
038	267153-0	ARANDELA 30 HR2300		1				
039	325783-4	CASQUILLO 9B HR2610T		1				
040	325791-5	EJE IMPACTADOR HR2610T		1				
041	325792-3	ARANDELA 10 HR2611FT		1				
042	234149-6	MUELLE 20 HR2611FT		1				
043	325793-1	JUNTA HR2611FT		1				
044	213073-6	JUNTA 9		1				
045	233979-2	ANILLO ELASTICO HR2300		1				
046	326139-4	PERCUTOR BHR242		1				
047	213258-4	JUNTA TORICA 17.5		1				
048	310345-1	CILINDRO PISTON HR2300		1				
049	346036-8	PLACA GUIA BHR261T		1				
050	324215-8	ARTICULACION DE PISTON		1				
051	234098-7	MUELLE COMPRESION 14 BHR261T		1				
052	267447-3	ARANDELA 14 HR2300		1				
053	211012-0	RODAMIENTO BOLAS 60622/HR2410		1				
054	257336-0	GRUPILLA BHR242		1				
055	253186-1	ARANDELA AISLANTE 7*		1				
056	227231-8	CORONA 10 HR2610		1				
057	331814-9	CAMPANA CAMBIO HR2610		1	*			
057-1	326849-3	CLUTCH CAM A	S	1				
058	326140-9	EJE PIÑON BHR242		1				
059	219020-5	ROTULA 10 HR2300		1				
060	227588-7	CORONA 32 BHR242		1				
061	257323-9	JUNTA 8 BHR242		1				
062	922118-6	TOR. CAB. HEX. 4X12 P/4604DW		2				
063	346038-4	CIERRE RODAMIENTO BHR261T		1				
064	211032-4	RODAMIENTO PARA 608ZZ		1				
065	324212-4	SEGMENTO 8		1				
066	922147-9	TORNILLO HEXAGONAL M4X25*		2				
067	141230-5	SOPORTE INTERIOR BHR242		1				
068	213767-3	JUNTA 75 BHR242		1				
069	318810-4	CARCASA INTERIOR BHR242		1				
070	443153-6	FIELTRO POLVO HR2300		1				

Artículo	Código	Descripción	Interc	Cantida	N/O	Opción 1	Opción 2	Notas
071	922118-6	TOR. CAB. HEX. 4X12 P/4604DW		2				
072	346536-8	SUJECCION RODAMIENTO BHR242		1				
073	256536-9	EJE 6 BHR242		1				
074	346538-4	PLACA GUIA BHR242		1				
075	313224-2	CONTRAPESO BHR242		1				
076	346538-4	PLACA GUIA BHR242		1				
077	253726-5	ARANDELA PLANA 6*		1				
078	961018-5	GRUPILLA E-5*		1				
079	213008-7	JUNTA TORICA 22.4		1				
080	141458-5	PIÑON 11 COMPLETO BHR242		1				
081	210024-0	RODAMIENTO 608 PARA HR5001C		1				
082	253835-0	ARANDELA PLANA 8 8406C		1				
083	619293-4	INDUCIDO BHR242		1				
084	210022-4	RODAMIENTO DE BOLAS 626DDW		1				
085	629922-1	STATOR BHR242		1	*			
085-1	529922-0	STATOR ASS'Y	<	1	*			
085-2	529187-4	STATOR ASS'Y	S	1				
086	620241-8	CONTROLLER		1				
087H	187687-6	HOUSING SET		1	*			
D10		INC. 91			*			
087I	187687-6	HOUSING SET		1	*			
D10		INC. 91			*			
087J	187687-6	HOUSING SET		1	*			
D10		INC. 91			*			
087K	187687-6	HOUSING SET		1	*			
D10		INC. 91			*			
087L	187687-6	HOUSING SET		1	*			
D10		INC. 91			*			
087M	187687-6	HOUSING SET		1	*			
D10		INC. 91			*			
087N	187687-6	HOUSING SET		1	*			
D10		INC. 91			*			
087O	187687-6	HOUSING SET		1	*			
D10		INC. 91			*			
087P	187687-6	HOUSING SET		1	*			
D10		INC. 91			*			
087Q	187687-6	HOUSING SET		1	*			
D10		INC. 91			*			
087R	187687-6	HOUSING SET		1	*			
D10		INC. 91			*			
087S	187687-6	HOUSING SET		1	*			
D10		INC. 91			*			
087T	187687-6	HOUSING SET		1	*			
D10		INC. 91			*			
087-1H	183A34-5	HOUSING SET	<	1	*			
D10		INC. 91			*			
087-1I	183A34-5	HOUSING SET	<	1	*			
D10		INC. 91			*			

Artículo	Código	Descripción	Interc	Cantida	N/O	Opción 1	Opción 2	Notas
087-1J	183A34-5	HOUSING SET	<	1	*			
D10		INC. 91			*			
087-1K	183A34-5	HOUSING SET	<	1	*			
D10		INC. 91			*			
087-1L	183A34-5	HOUSING SET	<	1	*			
D10		INC. 91			*			
087-1M	183A34-5	HOUSING SET	<	1	*			
D10		INC. 91			*			
087-1N	183A34-5	HOUSING SET	<	1	*			
D10		INC. 91			*			
087-1O	183A34-5	HOUSING SET	<	1	*			
D10		INC. 91			*			
087-1P	183A34-5	HOUSING SET	<	1	*			
D10		INC. 91			*			
087-1Q	183A34-5	HOUSING SET	<	1	*			
D10		INC. 91			*			
087-1R	183A34-5	HOUSING SET	<	1	*			
D10		INC. 91			*			
087-1S	183A34-5	HOUSING SET	<	1	*			
D10		INC. 91			*			
087-1T	183A34-5	HOUSING SET	<	1	*			
D10		INC. 91			*			
087-1U	183A34-5	HOUSING SET		1	*			
D10		INC. 91			*			
087-2	183C02-0	HOUSING SET	S	1				
D10		INC. 91						
088	815B50-2	DHR243 SERIAL NO. LABEL		1				
089	815B44-7	DHR243 NAME PLATE		1				
090	266326-2	TORNILLO M4X18		10				
091H	187687-6	HOUSING SET		1	*			
D10		INC. 87			*			
091I	187687-6	HOUSING SET		1	*			
D10		INC. 87			*			
091J	187687-6	HOUSING SET		1	*			
D10		INC. 87			*			
091K	187687-6	HOUSING SET		1	*			
D10		INC. 87			*			
091L	187687-6	HOUSING SET		1	*			
D10		INC. 87			*			
091M	187687-6	HOUSING SET		1	*			
D10		INC. 87			*			
091N	187687-6	HOUSING SET		1	*			
D10		INC. 87			*			
091O	187687-6	HOUSING SET		1	*			
D10		INC. 87			*			
091P	187687-6	HOUSING SET		1	*			
D10		INC. 87			*			
091Q	187687-6	HOUSING SET		1	*			

Artículo	Código	Descripción	Interc	Cantida	N/O	Opción 1	Opción 2	Notas
D10		INC. 87			*			
091R	187687-6	HOUSING SET		1	*			
D10		INC. 87			*			
091S	187687-6	HOUSING SET		1	*			
D10		INC. 87			*			
091T	187687-6	HOUSING SET		1	*			
D10		INC. 87			*			
091-1H	183A34-5	HOUSING SET	<	1	*			
D10		INC. 87			*			
091-1I	183A34-5	HOUSING SET	<	1	*			
D10		INC. 87			*			
091-1J	183A34-5	HOUSING SET	<	1	*			
D10		INC. 87			*			
091-1K	183A34-5	HOUSING SET	<	1	*			
D10		INC. 87			*			
091-1L	183A34-5	HOUSING SET	<	1	*			
D10		INC. 87			*			
091-1M	183A34-5	HOUSING SET	<	1	*			
D10		INC. 87			*			
091-1N	183A34-5	HOUSING SET	<	1	*			
D10		INC. 87			*			
091-1O	183A34-5	HOUSING SET	<	1	*			
D10		INC. 87			*			
091-1P	183A34-5	HOUSING SET	<	1	*			
D10		INC. 87			*			
091-1Q	183A34-5	HOUSING SET	<	1	*			
D10		INC. 87			*			
091-1R	183A34-5	HOUSING SET	<	1	*			
D10		INC. 87			*			
091-1S	183A34-5	HOUSING SET	<	1	*			
D10		INC. 87			*			
091-1T	183A34-5	HOUSING SET	<	1	*			
D10		INC. 87			*			
091-1U	183A34-5	HOUSING SET		1	*			
D10		INC. 87			*			
091-2	183C02-0	HOUSING SET	S	1				
D10		INC. 87						
092	453124-5	PALANCA CAMBIO F/R BHR242		1				
093	453123-7	PALANCA INTERRUPTOR BHR242		1				
094	650709-0	SWITCH C3JW-1A-P		1				
095	233598-4	MUELLE TORSION 6 BHR242		1				
096	313226-8	PLACA INTERRUPTOR BHR242		1				
097	644808-8	TERMINAL		1				
098	424476-1	GUARDAPOLVO BHR242		1				
099	187377-1	CARCASA BATERIA BHR242		1				
C10	263005-3	FIJADOR 6*		2				
D10		INC. 104						
100	263036-2	BULON 5 PARA BTW250		1				

Artículo	Código	Descripción	Interc	Cantida	N/O	Opción 1	Opción 2	Notas
101	268184-2	BULON 1.5 BTW250		1				
102	424473-7	AMORTIGUADOR GOMA BHR242		1				
103	424473-7	AMORTIGUADOR GOMA BHR242		1				
104	187377-1	CARCASA BATERIA BHR242		1				
C10	263005-3	FIJADOR 6*		2				
D10		INC. 99						
105	286263-4	CAPUCHON 35 HR2020		1				
106	233940-9	ANILLA ELASTICA 19		1				
107	418217-5	TAPA DE RACOR HR2450FT		1				
108	345333-9	TAPON DE BLOQUEO HR2450FT		1				
109	216022-2	BOLA DE ACERO 7.0		1				
110	345187-4	GUIA DE RACOR HR2020		1				
111	233916-6	MUELLE CONICO 21-29 HR2020		1				
112	267279-8	ARANDELA PLANA 21		1				
113	324355-2	PORTA HERRAMIENTAS HR2450FT		1				
114	216013-3	BOLA DE ACERO 6*		2				
115	231669-1	MUELLE TORSION 31 HR2450FT		1				
116	345334-7	ANILLO DE CAMBIO HR2450FT		1				
117	418218-3	TAPA DE CAMBIO HR2450FT		1				
118	216018-3	BOLA DE ACERO 5.0 PARA HP2030		1				
119	345335-5	RESORTE LAMINAR HR2450FT		1				
120	267270-6	PLANA 24 HR2450FT		1				
121	233924-7	ANILLA ELASTICA 21 HR2450FT		1				
122	893072-0	CLEAR LABEL		1				
123	890994-5	CLEAR LABEL		1				
124	424734-5	SPONGE	S	2				
A01	324219-0	TOPE DE PROFUNDIDAD HR2020		1				
A02	194079-2	PORTABROCAS CIERRE RAP.HR2450T		1	*			
C10	251425-3	TORNILLO M6X22 BHR261		1	*			
C20	324353-6	CHUCK HOLDER		1	*			
C30	418216-7	SPACER		1	*			
A02-1	194079-2	PORTABROCAS CIERRE RAP.HR2450T	<	1				
C20	324353-6	CHUCK HOLDER		1				
C30	418216-7	SPACER		1				
A03H	***DC18RC	DC18RC FAST CHARGER		1				
A03J	***DC18RC	DC18RC FAST CHARGER		1				
A03K	***DC18RC	DC18RC FAST CHARGER		1				
A03L	821552-6	MALETIN MAKPAC TIPO 4		1				
C10	453974-8	LATCH		4				
A03M	***DC18RC	DC18RC FAST CHARGER		1				
A03N	***DC18RC	DC18RC FAST CHARGER		1				
A03O	***DC18RC	DC18RC FAST CHARGER		1				
A03P	***DC18RC	DC18RC FAST CHARGER		1				
A03Q	***DC18RC	DC18RC FAST CHARGER		1				
A03R	***DX02	DUST EXTRACTION SYSTEM		1				
D10		COMPO-PARTS						
D20		INC. A04						
A03S	***DC18RC	DC18RC FAST CHARGER		1				

Artículo	Código	Descripción	Interc	Cantida	N/O	Opción 1	Opción 2	Notas
A03T	***DC18RC	DC18RC FAST CHARGER		1				
A04H	194204-5	BATERIA BL1830 18V LITIO		2	*			
A04J	194204-5	BATERIA BL1830 18V LITIO		2	*			
A04K	194204-5	BATERIA BL1830 18V LITIO		2	*			
A04L	837649-1	INNER TRAY		1				
A04M	194204-5	BATERIA BL1830 18V LITIO		2	*			
A04N	196399-0	BATERIA BL1840 18V		2	*			
A04O	196399-0	BATERIA BL1840 18V		2	*			
A04P	196399-0	BATERIA BL1840 18V		2	*			
A04Q	196671-0	BATTERY BL1850 SET		2	*			
A04R	424474-5	TAPA COLECTOR DX01		5				
A04S	196671-0	BATTERY BL1850 SET		2	*			
A04T	196671-0	BATTERY BL1850 SET		2	*			
A04-1H	194204-5	BATERIA BL1830 18V LITIO	O	2	*			
A04-1J	194204-5	BATERIA BL1830 18V LITIO	O	2	*			
A04-1K	194204-5	BATERIA BL1830 18V LITIO	O	2	*			
A04-1M	194204-5	BATERIA BL1830 18V LITIO	O	2	*			
A04-1N	196399-0	BATERIA BL1840 18V	O	2	*			
A04-1O	196399-0	BATERIA BL1840 18V	O	2	*			
A04-1P	196399-0	BATERIA BL1840 18V	O	2	*			
A04-1Q	196671-0	BATTERY BL1850 SET	O	2	*			
A04-1S	196671-0	BATTERY BL1850 SET	O	2	*			
A04-1T	196671-0	BATTERY BL1850 SET	O	2	*			
A04-2H	197600-6	BATTERY BL1830B SET	<	2				
A04-2J	197600-6	BATTERY BL1830B SET	<	2				
A04-2K	197600-6	BATTERY BL1830B SET	<	2				
A04-2M	197600-6	BATTERY BL1830B SET	<	2				
A04-2N	197265-4	BATTERY BL1840B SET	<	2				
A04-2O	197265-4	BATTERY BL1840B SET	<	2				
A04-2P	197265-4	BATTERY BL1840B SET	<	2				
A04-2Q	197280-8	BATTERY BL1850B SET	<	2				
A04-2S	197280-8	BATTERY BL1850B SET	<	2				
A04-2T	197280-8	BATTERY BL1850B SET	<	2				
A05H	450128-8	BATTERY COVER		1				
A05J	450128-8	BATTERY COVER		1				
A05K	450128-8	BATTERY COVER		1				
A05L	802M30-3	DHR243ZJ INDICATION LABEL		1				
A05M	450128-8	BATTERY COVER		1				
A05N	450128-8	BATTERY COVER		1				
A05O	450128-8	BATTERY COVER		1				
A05P	450128-8	BATTERY COVER		1				
A05Q	450128-8	BATTERY COVER		1				
A05S	450128-8	BATTERY COVER		1				
A05T	450128-8	BATTERY COVER		1				
A06H	141401-4	MALETIN PVC BHR242		1				
C10	162271-8	CIERRE MALETA HM1203C		2				
C20	890904-2	INDICATION LABEL		1				
A06J	141402-2	PLASTIC CASE COMPLETE		1				

Artículo	Código	Descripción	Interc	Cantida	N/O	Opción 1	Opción 2	Notas
C10	162271-8	CIERRE MALETA HM1203C		2				
C20	890904-2	INDICATION LABEL		1				
A06K	821552-6	MALETIN MAKPAC TIPO 4		1				
C10	453974-8	LATCH		4				
A06L	802M33-7	DHR243ZJ PLASTIC CASE LABEL		2				
A06M	821552-6	MALETIN MAKPAC TIPO 4		1				
C10	453974-8	LATCH		4				
A06N	141401-4	MALETIN PVC BHR242		1				
C10	162271-8	CIERRE MALETA HM1203C		2				
C20	890904-2	INDICATION LABEL		1				
A06O	821552-6	MALETIN MAKPAC TIPO 4		1				
C10	453974-8	LATCH		4				
A06P	821552-6	MALETIN MAKPAC TIPO 4		1				
C10	453974-8	LATCH		4				
A06Q	141401-4	MALETIN PVC BHR242		1				
C10	162271-8	CIERRE MALETA HM1203C		2				
C20	890904-2	INDICATION LABEL		1				
A06S	821552-6	MALETIN MAKPAC TIPO 4		1				
C10	453974-8	LATCH		4				
A06T	821552-6	MALETIN MAKPAC TIPO 4		1				
C10	453974-8	LATCH		4				
A06U	821552-6	MALETIN MAKPAC TIPO 4		1				
C10	453974-8	LATCH		4				
A07H	802M42-6	DHR243RFE PLASTIC CASE LABEL		2	*			
A07J	802M46-8	DHR243RFEV PLASTIC CASE LABEL		2				
A07K	837649-1	INNER TRAY		1				
A07M	837677-6	INNER TRAY		1				
A07N	802M36-1	DHR243RME PLASTIC CASE LABEL		2	*			
A07O	837649-1	INNER TRAY		1				
A07P	837677-6	INNER TRAY		1				
A07Q	804H95-1	DHR243RTE PLASTIC CASE LABEL		2	*			
A07S	837649-1	INNER TRAY		1				
A07T	837677-6	INNER TRAY		1				
A07U	837677-6	INNER TRAY		1				
A07-1H	802M41-8	DHR243RFE PLASTIC CASE LABEL	<	2				
A07-1N	802M35-3	DHR243RME PLASTIC CASE LABEL	<	2				
A07-1Q	805W76-8	DHR243RTE PLASTIC CASE LABEL	<	2				
A08J	***DX02	DUST EXTRACTION SYSTEM		1				
D10		COMPO-PARTS						
D20		INC. A09						
A08K	802M29-8	DHR243RFJ INDICATION LABEL		1				
A08M	802M31-1	DHR243RFJV INDICATION LABEL		1				
A08O	802M47-6	DHR243RMJ INDICATION LABEL		1				
A08P	802M50-7	DHR243RMJV INDICATION LABEL		1				
A08S	805R30-2	DHR243RTJ INDICATION LABEL		1				
A08T	805R32-8	DHR243RTJV INDICATION LABEL		1				
A08U	806H81-8	DHR243ZJV INDICATION LABEL		1				
A09J	424474-5	TAPA COLECTOR DX01		5				

